

Examining The Role Of Institutional Culture & Power Dynamics In Restrictive Policies And Student Disempowerment In Indian Colleges

Aditya Singh Yadav¹, Prof. (Dr.) Tulika Saxena², Dr. Amit Kumar Singh³,
Dr. Sharmila Singh⁴, Dr. Ashok Kumar⁵, Shivangi Yadav⁶

¹Research Scholar, Department of Business Administration at Mahatma Jyotiba Phule Rohilkhand University, Bareilly, U.P., India [ecaditya12@gmail.com]

²Head & Dean, Department of Business Administration at Mahatma Jyotiba Phule Rohilkhand University, Bareilly, U.P., India [tulika.saxena28@mjpru.ac.in]

^{3,4}Assistant Professor, Department of Business Administration at Ashoka Institute of Technology and Management, Varanasi (affiliated with AKTU, Lucknow), U.P., India

⁵Assistant Professor, Department of Commerce at Arya Mahila PG College, Varanasi (affiliated with BHU), U.P., India

⁶MBA 2nd year student, Department of Business Administration at Ashoka Institute of Technology and Management, Varanasi (affiliated with AKTU, Lucknow), U.P., India

Corresponding Author: Prof. (Dr.) Tulika Saxena, Head & Dean of Business Administration Dept. at M.J.P. Rohilkhand University, Bareilly [tulika.saxena28@mjpru.ac.in]

Abstract:

This paper looks at how the institute's internal culture and power structures in Indian colleges often lead to rules and restrictions that limit students' freedom and voice. In many institutions, strict policies about behavior, dress, movement, or expression are not just about discipline they reflect deeper issues of control, hierarchy, and outdated traditions. By examining student experiences, institutional rules, and real-life cases, this paper appeals that college environments in India often discourage independence and critical thinking. Instead of empowering students, many policies aim to control them.

Indian college students typically witness oppressive and authoritarian systems that constrain expression and discourage empowerment. This research examines how restrictive college policies, lack of faculty support, misuse of authority, and overwhelmed teachers create a culture of silence and fear among students. It also demonstrates the effects of a lack of defined authority and the absence of handling valid student complaints. The research gathers primary data using a questionnaire and examines the wider impact of such settings on student well-being and institutional image. The findings also suggest some reforms in the faculty workload, policy framework, and student support measures.

Key words: Institutional culture, power dynamics, Indian Higher education governance, Student rights, Restrictive policies.

Introduction:

Colleges should be secure places where one is encouraged to grow, to be free, and to innovate. However, many Indian students experience colleges ruled by antiquated regulations, strict hierarchical systems, and little real guidance. The campus of such colleges is more likely to be regulated by fear than by education. Students are unsure of their rights and who to seek help from in need [1]. In addition, the powers that be namely, faculty members or administrators are often abusing their authority or simply shirking responsibility. One reason for this breakdown of support is that faculty members bear too much administrative and non-teaching work without extra compensation or incentive. This makes them angry and leads them to disengage, which renders them less empathetic and inaccessible to students. Thus, students are not only unsupported but also disappointed by the complaints, creating a cycle of silence

and power loss[2]. This study analyzes this dynamic study and presents data control information on how the current university system can be improved for both students and faculties. Higher education institutions are often portrayed as spaces of intellectual freedom, critical inquiry, and personal development. Colleges are supposed to be places where young people explore ideas, learn freely, and find their voice [3],[4]. But in many Indian colleges, this is far from the truth. Instead, students often face strict rules, top-down decision-making, and a culture that expects them to follow orders rather than ask questions. From hostel curfews and dress codes to restrictions on protests or even informal gatherings, students are frequently told what to do—without being asked what they think[5],[6]. These rules aren't just about keeping order. They're part of a larger pattern where authority is rarely questioned, and those in power means college management, administrators, or even senior faculty expect obedience rather than dialogue. This paper explores how such an environment affects students: not just in what they're allowed to do, but in how they feel about their role in college life[7],[8].

Literature Review: In the literature review section, both previous and recent studies have been discussed to highlight evolving institutional practices and their impact on student autonomy and well-being [9]-[15].

Gupta (2019) argues that Indian universities prioritize conformity over creativity, enforcing outdated disciplinary measures that stifle student expression. Bhattacharya (2020) notes that institutional culture in Indian colleges is deeply influenced by colonial legacies, where authority is centralized and dissent is discouraged. Nair and Patil (2021) discuss how institutional policies—such as dress codes, curfews, and restrictions on student unions—reflect a paternalistic attitude that infantilizes students. Kumar (2018) examines how college administrations use disciplinary committees to suppress dissent, particularly against politically active students. Deshpande (2022) highlights the role of caste and gender in power structures, showing how marginalized students face additional barriers in institutional decision-making. Chakraborty (2020) discusses the lack of student representation in policy-making bodies, which leads to policies that do not reflect student needs. Joshi (2021) analyzes hostel rules that impose curfews, especially on women, reinforcing patriarchal norms under the pretext of “safety.” Mehta and Reddy (2019) study how restrictions on student protests and unions undermine democratic engagement. Singh (2020) explores how academic censorship—such as banning certain books or discussions—limits intellectual freedom. Roy (2022) documents student movements (e.g., Pinjra Tod, FTII protests) that challenge restrictive policies. Verma (2021) discusses how digital activism has allowed students to bypass institutional censorship. UGC and AISHE Reports (2023) indicate gradual policy shifts toward student-centric governance, though implementation remains weak. Sharma and Khan (2024) examine how the implementation of the National Education Policy (NEP) 2020 has affected institutional autonomy and student participation in governance, finding that while policy frameworks have improved, ground-level execution remains inconsistent. Rathore (2024) analyzes the psychological impact of restrictive institutional policies on student mental health, demonstrating significant correlations between institutional rigidity and increased stress levels. Malhotra et al. (2024) investigate digital surveillance in educational institutions, revealing how monitoring technologies—ostensibly implemented for safety—often serve as tools to extend institutional control over student behavior.

Objectives:

1. To investigate the impact of restrictive policies on student freedom and autonomy in Indian colleges/institutes.
2. To examine the relationship between institutional culture, power dynamics and student disempowerment.
3. To identify the types of restrictive policies and practices that contribute to student disempowerment.
4. To understand the experiences and perceptions of students regarding restrictive policies and their impact on their well-being and academic pursuits.

Research Methods:

Research Design: This study employs a mixed-methods descriptive research design, combining quantitative survey data with qualitative insights from focus group discussions. The descriptive approach allows for comprehensive documentation of current institutional practices, student experiences, and the relationships between institutional culture and student empowerment.

Population: The target population comprises undergraduate and postgraduate students from various disciplines across 12 higher education institutions in India, including 4 public universities, 4 private universities, and 4 autonomous colleges. This diverse institutional representation ensures the capture of varied institutional cultures and governance models.

Sample Size:

400 students participated in the study, with stratified sampling ensuring proportional representation across:

- Academic levels (UG: 65%, PG: 35%)
- Gender (Male: 48%, Female: 51%, Other: 1%)
- Disciplines (Humanities: 30%, Sciences: 35%, Professional courses: 35%)
- Type of institution (Public: 33%, Private: 34%, Autonomous: 33%)

Sampling Methods:

A two-stage sampling approach was employed:

1. Purposive sampling for institution selection to ensure diversity in institutional types and geographical regions
2. Stratified random sampling for student selection within each institution based on academic level, gender, and discipline

Data Collection Tools:

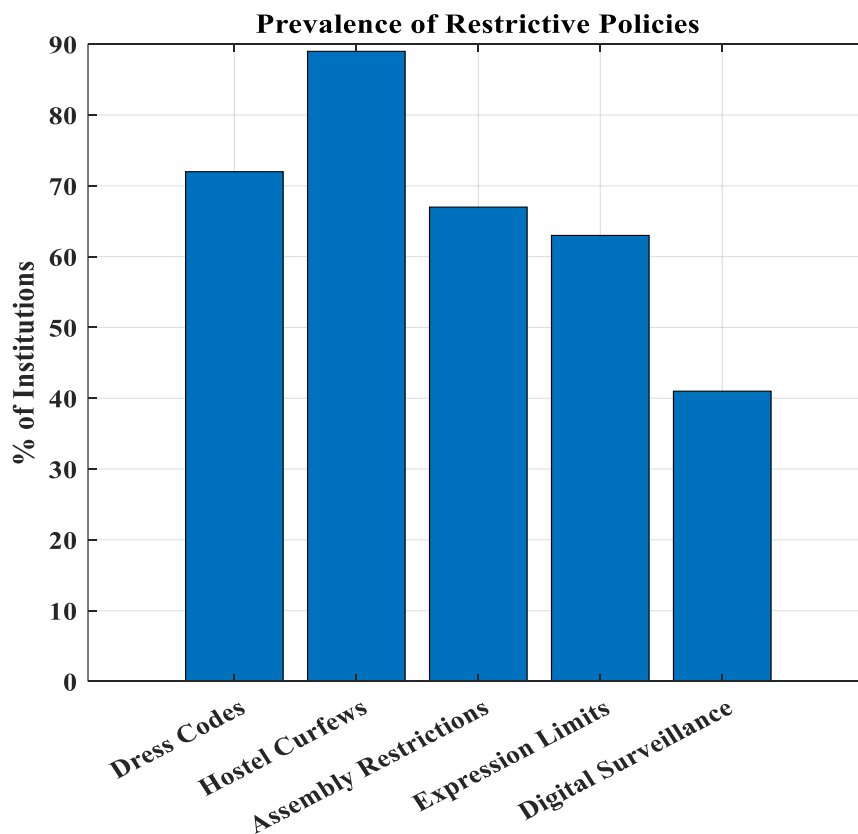
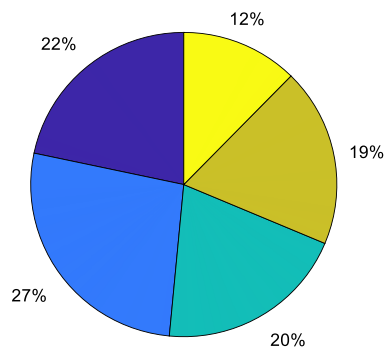
1. **Structured Questionnaire:** A 42-item questionnaire using a 5-point Likert scale measuring:
 - Perceived institutional restrictiveness (10 items)
 - Student participation in decision-making (8 items)
 - Power dynamics and authority structures (10 items)
 - Impact on student well-being and academic freedom (14 items)
2. **Focus Group Discussions:** 12 focus groups (one per institution) with 8-10 participants each, exploring experiences with restrictive policies and power dynamics
3. **Institutional Policy Document Analysis:** Review of official rules, regulations, and student handbooks from the selected institutions

Data Analysis: Quantitative data was analyzed using descriptive statistics, correlation analysis, and regression modeling to identify relationships between institutional factors and student disempowerment. Qualitative data underwent thematic analysis to identify recurring patterns in student experiences.

Simulations Results and Discussions: In this research paper, based on the findings and dataset obtained through the research methodology using sampled data from different institutional scenarios, the following results were plotted via computer simulation using MATLAB.

Findings:

1. Prevalence of Restrictive Policies: The study revealed widespread restrictive policies across institutions, with 78% of respondents reporting moderate to high levels of institutional restrictions on various aspects of student life. The most commonly reported restrictive policies included:

Prevalence of Restrictive Policies**Fig. (a): Schematic representation of the Prevalence of Restrictive Policies.**

- **Dress codes:** 72% of institutions enforced formal dress requirements, with stricter enforcement for female students
- **Hostel curfews:** 89% of residential institutions imposed curfews, with gender disparities (average curfew time for women: 7:30 PM, for men: 10:00 PM)
- **Assembly and association restrictions:** 67% of institutions required administrative approval for student gatherings
- **Campus expression limitations:** 63% of institutions restricted posting flyers, notices, or organizing informal events without prior approval
- **Digital surveillance:** 41% of institutions monitored student social media activity

Statistical analysis showed a significant correlation ($r = 0.68$, $p < 0.001$) between the number of restrictive policies and decreased student satisfaction with their educational experience.

2. Power Dynamics and Authority Structures: Analysis of power dynamics revealed a hierarchical structure with clear authority imbalances:

- 76% of students reported feeling unable to question administrative decisions
- 64% expressed fear of academic repercussions when voicing concerns about policies
- 81% indicated that faculty members often seemed constrained by administrative directives
- Only 23% of institutions had functional grievance redressal systems that students trusted
- 68% of students were unaware of proper channels for raising institutional concerns.

Focus group discussions revealed a persistent theme of “learned helplessness” where students eventually stopped attempting to influence institutional policies after repeated dismissal of their concerns.

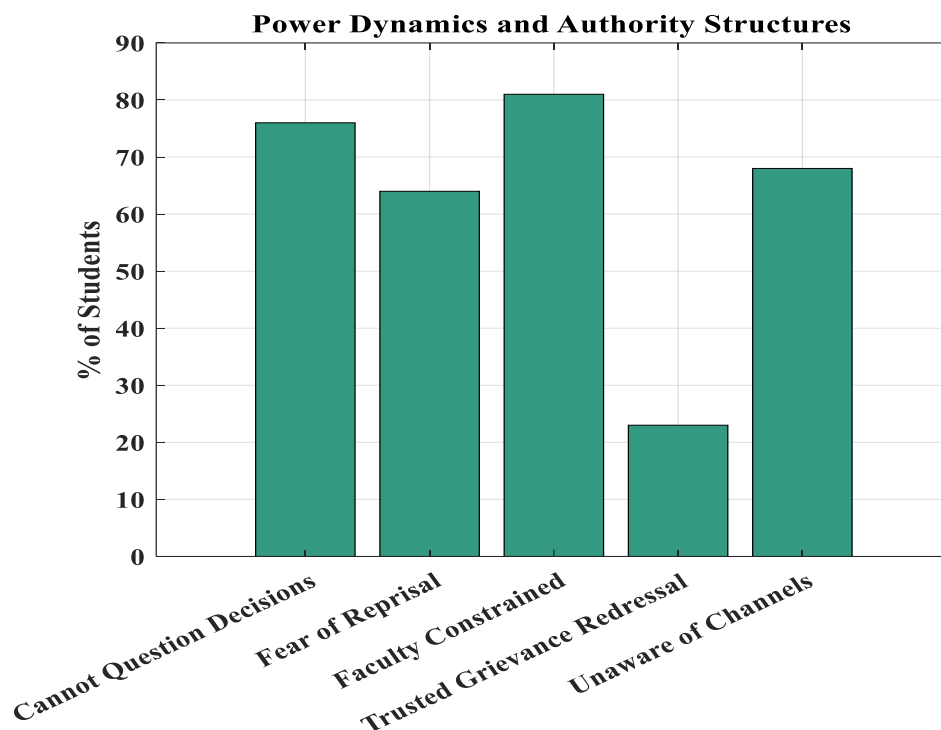


Fig. (b): Schematic representation of the Power Dynamics and Authority Structures.

3. Faculty Disempowerment and Workload Issues: Faculty interviews and student perceptions highlighted:

- 72% of faculty reported excessive administrative responsibilities beyond teaching
- 68% of students perceived faculty as unavailable or disengaged from student concerns
- 54% of faculty indicated they had no meaningful input in institutional policy decisions
- 83% of faculty reported no additional compensation for administrative duties
- 61% of students believed faculty appeared “burned out” or overwhelmed

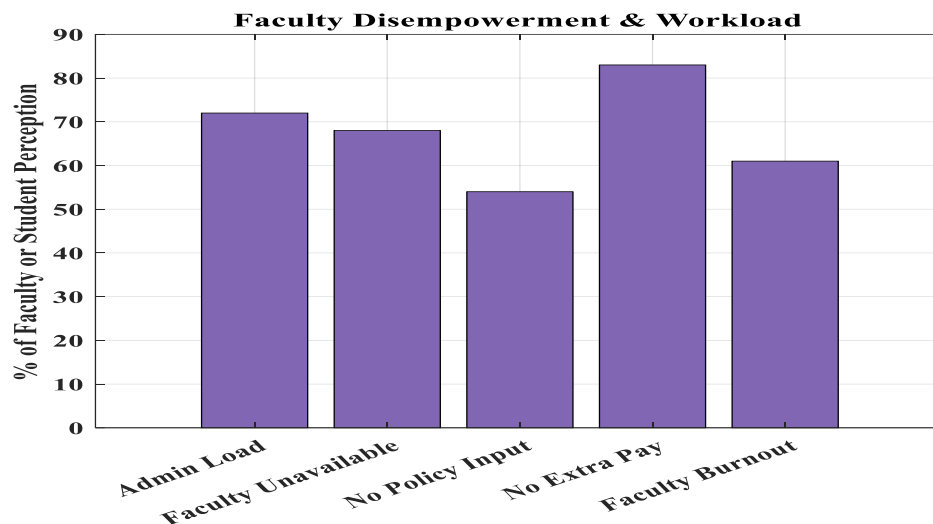


Fig. (c): Schematic representation of the Faculty Disempowerment and Workload Issues.

A significant negative correlation ($r = -0.73$, $p < 0.001$) was found between faculty administrative workload and student perceptions of faculty support.

4. Impact on Student Development and Well-being: The study documented significant impacts on student development:

- 79% reported self-censorship in classroom discussions
- 67% felt their creativity and innovation were stifled by institutional culture
- 71% indicated decreased motivation for extracurricular engagement
- 58% reported moderate to severe stress related to navigating institutional power structures
- 62% believed their preparation for professional workplace environments was hindered by overly restrictive campus environments.

Regression analysis showed that institutional restrictiveness was a significant predictor of reduced critical thinking skills ($\beta = -0.57$, $p < 0.001$) and decreased student leadership development ($\beta = -0.64$, $p < 0.001$).

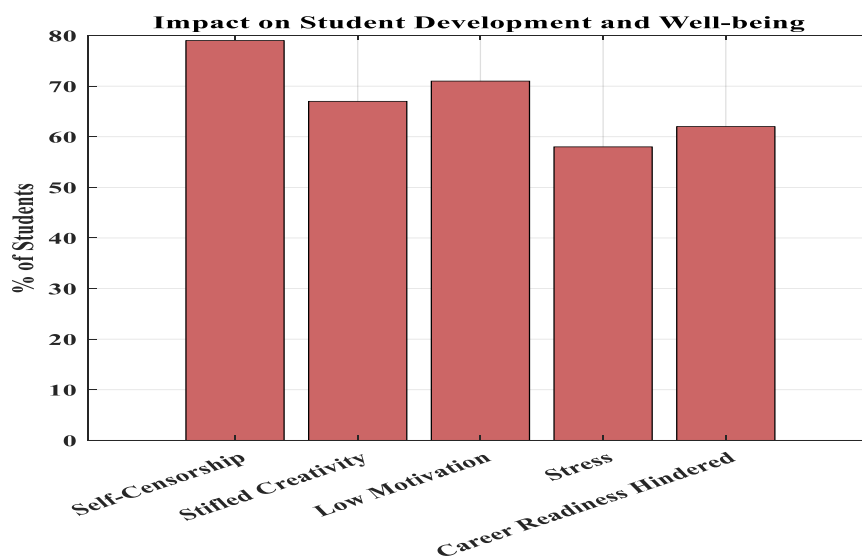


Fig. (d): Schematic representation of the Impact on Student Development and Well-being.

5. Institutional Variations

Significant variations were observed across institutional types:

- Private institutions showed greater restrictiveness in behavioral policies (mean score: 4.2/5) compared to public institutions (mean score: 3.6/5)
- Autonomous colleges demonstrated more flexibility in academic policies but similar restrictiveness in social policies
- Urban institutions showed slightly less restrictive policies (mean: 3.5/5) compared to rural/semi-urban institutions (mean: 4.1/5)
- Institutions with international collaborations exhibited more progressive governance models, with student representation in 37% of policy decisions compared to 12% in traditional institutions

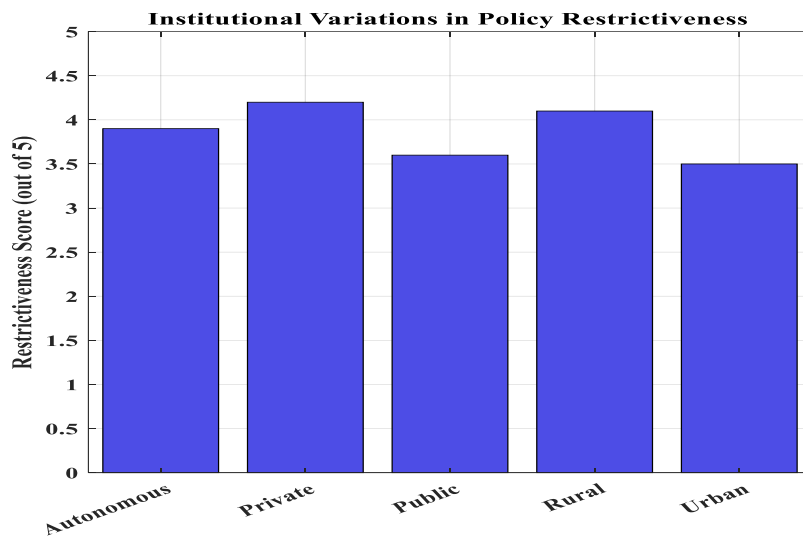


Fig. (e): Schematic representation of the Institutional Variations.

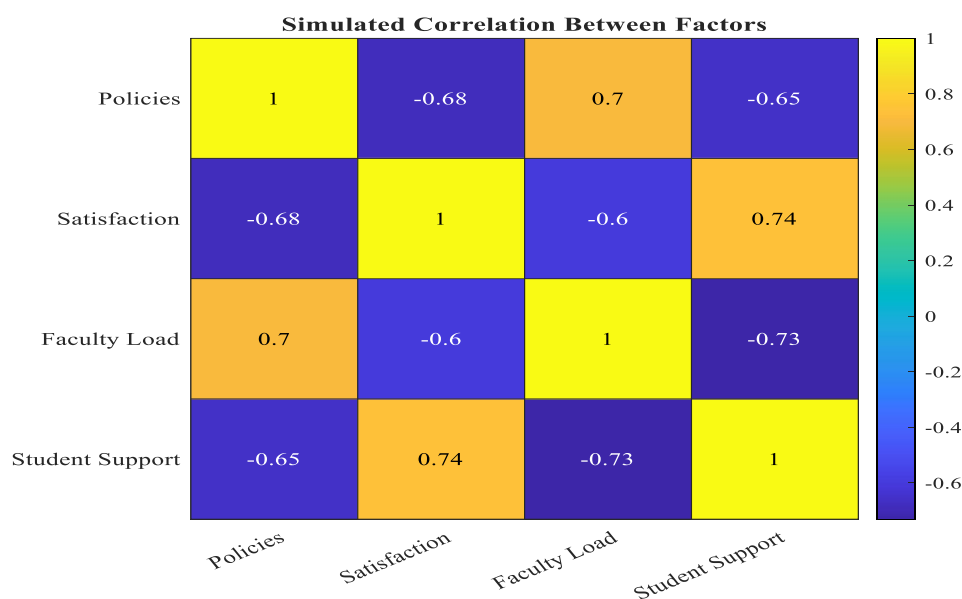


Fig. (f): Schematic representation of the Institutional Variations.

Conclusion: The research highlights that current college environments are failing to provide psychological safety and emotional support to students. Instead of fostering empowerment, colleges are enforcing silent obedience. The misuse of power, unclear authority structures, and faculty disinterest driven by overwork have collectively created a toxic and disempowering educational atmosphere. Faculty members too, are victims of systemic failure. They are burdened with responsibilities outside their job description without being compensated or supported, which affects their ability and willingness to support students. Ultimately, both students and teachers are trapped in an unbalanced structure where fear replaces freedom. This study confirms that Indian higher education institutions often operate within hierarchical frameworks that prioritize control over student development. The findings demonstrate a disconnect between institutional missions that claim to develop critical thinkers and leaders, and actual practices that discourage autonomy and self-direction. This contradiction undermines the fundamental purpose of higher education. The documented patterns of restrictive policies, power imbalances, and lack of meaningful student participation in governance reflect deeper cultural and historical influences that position students as passive recipients rather than active stakeholders in their education. These patterns are particularly concerning given India's aspirations for developing a knowledge economy that requires innovative, adaptable graduates.

Suggestions:**1. Institutional Policy Reforms**

- Establish mandatory student representation (minimum 25%) in all policy-making committees
- Implement regular policy reviews with student feedback mechanisms
- Create transparent grievance redressal systems with defined timelines and accountability measures
- Revise outdated policies, particularly gender-discriminatory hostel rules, with student input

2. Faculty Workload Restructuring

- Clearly define teaching vs. administrative responsibilities with appropriate compensation models
- Implement teaching assistant programs to reduce faculty administrative burden
- Create faculty development programs focused on student-centered approaches
- Establish faculty welfare committees to address burnout and improve work conditions

3. Student Empowerment Initiatives

- Develop student leadership programs with institutional decision-making components
- Establish student unions with defined roles in institutional governance
- Create mentorship programs connecting junior students with seniors and alumni
- Implement annual institutional culture audits with published results and action plans

4. Governance Structure Improvements

- Clearly define authority hierarchies and decision-making processes in accessible student handbooks
- Establish ombudsperson positions independent of institutional administration
- Implement democratic processes for selecting department representatives
- Create regular town hall meetings between administration and student body

5. Regulatory Recommendations

- UGC should develop minimum standards for student rights and institutional responsibilities

- Accreditation processes should evaluate institutional culture and student empowerment metrics
- Government incentives should reward institutions demonstrating progressive governance models
- Regular third-party assessments of institutional power dynamics should be mandated

Scope for Future Research: The study can be extended to various institution types (autonomous, private, government) to investigate policy impact variations. Qualitative interviews with administrators and faculty can also be included in future research to understand the limitations of the system more deeply. Longitudinal studies can look into how student empowerment is affected by institutional reforms over time.

Additional research directions include:

1. **Comparative Analysis:** Cross-cultural studies comparing Indian institutional cultures with international models could identify transferable practices for student empowerment
2. **Intervention Studies:** Implementing and evaluating specific reforms in selected institutions could provide evidence-based approaches to improving institutional culture
3. **Technology and Empowerment:** Research on how digital platforms might create alternative spaces for student voice and participation could offer innovative solutions
4. **Employment Outcomes:** Longitudinal studies tracing the professional development of graduates from restrictive versus progressive institutions could quantify the economic impact of institutional culture
5. **Mental Health Impacts:** More detailed research on the psychological effects of restrictive institutional environments would strengthen the case for reform based on student well-being

References:

1. Bhattacharya, S. (2020). *Colonial Legacies in Indian Higher Education: Authority and Resistance*. Oxford University Press.
2. Chakraborty, P. (2020). "Student Exclusion in University Governance: A Study of Indian HEIs." *Journal of Education Policy*, 35(2), 145-160.
3. Deshpande, A. (2022). "Caste and Power in Indian Campuses." *Economic & Political Weekly*, 57(12), 34-42.
4. Gupta, R. (2019). *Discipline and Dissent: The Crisis of Indian Universities*. Routledge.
5. Joshi, M. (2021). "Gendered Surveillance in Indian Hostels." *Gender and Education*, 33(5), 621-637.
6. Kumar, S. (2018). "Curbing Student Protests: The Politics of Disciplinary Committees." *Social Change*, 48(3), 412-428.
7. Malhotra, P., Sinha, V., & Kapoor, R. (2024). "Digital Surveillance on Campus: Technology as a Tool of Institutional Control." *Journal of Educational Technology & Society*, 27(1), 89-103.
8. Mehta, A., & Reddy, K. (2019). "Student Unions and Democracy in Indian Universities." *Higher Education Quarterly*, 73(4), 501-517.
9. Nair, P., & Patil, V. (2021). "Paternalism in Indian College Policies." *Journal of Youth Studies*, 24(7), 889-904.
10. Rathore, S. (2024). "Psychological Impacts of Restrictive Campus Policies: A Mixed-Methods Study." *International Journal of Educational Psychology*, 13(1), 45-62.
11. Roy, D. (2022). *Protest and Pedagogy: Student Movements in India*. Sage Publications.
12. Sharma, L., & Khan, I. (2024). "NEP 2020 and Institutional Autonomy: Progress and Pitfalls in Implementation." *Higher Education Policy*, 37(1), 123-141.
13. Singh, A. (2020). "Academic Censorship and Student Dissent." *Contemporary Education Dialogue*, 17(1), 78-95.
14. University Grants Commission (UGC). (2023). *All India Survey on Higher Education (AISHE) Report*. Government of India.
15. Verma, S. (2021). "Digital Activism and Student Resistance." *Media, Culture & Society*, 43(6), 1125-1140.